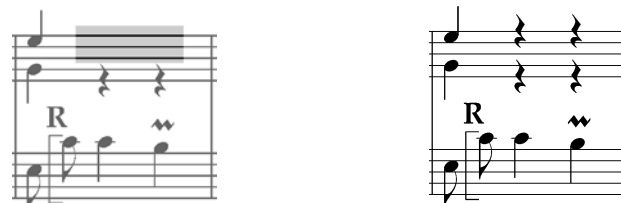


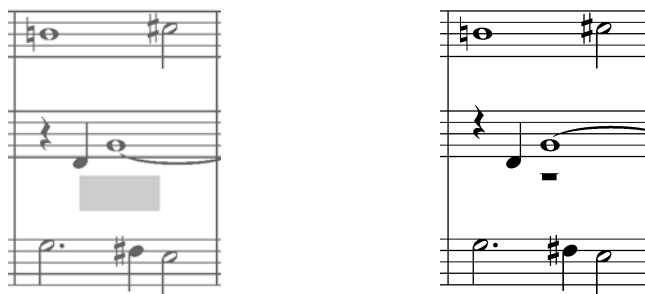
15/06/2018 - BuxWV 218 - p. 81 m. 177

Deux soupirs manquants au soprano / *Two quarter rests missing in soprano.*



15/06/2018 - BuxWV 224 - p. 87 m. 15

Pause manquante au ténor / *Whole rest missing in tenor.*



05/11/2019 – BuxWV 218 – p. 80 m. 119 – Basse : (♯-A-f) et non (♯-♯-A) / Bass should be (♯-A-f) and not (♯-♯-A).

Musical score for BuxWV 218, m. 119. The score is in three staves. The top staff is a treble clef with a complex rhythmic pattern. The middle staff is a treble clef with a simpler melody. The bottom staff is a bass clef. A grey box highlights the first measure of the bass line, showing a correction from a double-sharp A (A♯♯) to a natural A (A).

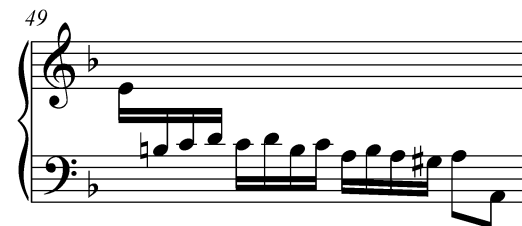
Musical score for BuxWV 218, m. 119. This is a corrected version of the score. The top and middle staves are identical to the original. The bottom staff (bass line) now correctly shows a natural A (A) in the first measure, instead of a double-sharp A (A♯♯).

16/06/2021 - BuxWV 179 - p. 4 Allemande, m. 13  
main gauche, note erronée / left hand, wrong note pitch

Musical score for BuxWV 179, m. 13. The score is in two staves. The top staff is a treble clef with a complex rhythmic pattern. The bottom staff is a bass clef. A grey box highlights the first measure of the bass line, showing a correction from a natural A (A) to a natural G (G).

Musical score for BuxWV 179, m. 13. This is a corrected version of the score. The top staff is identical to the original. The bottom staff (bass line) now correctly shows a natural G (G) in the first measure, instead of a natural A (A).

05/09/2022 – BuxWV 203 – p. 43 m. 49 – Note erronée / Wrong note pitch



05/09/2022 – BuxWV 203 – p. 44 m. 104 – Note erronée / Wrong note pitch

