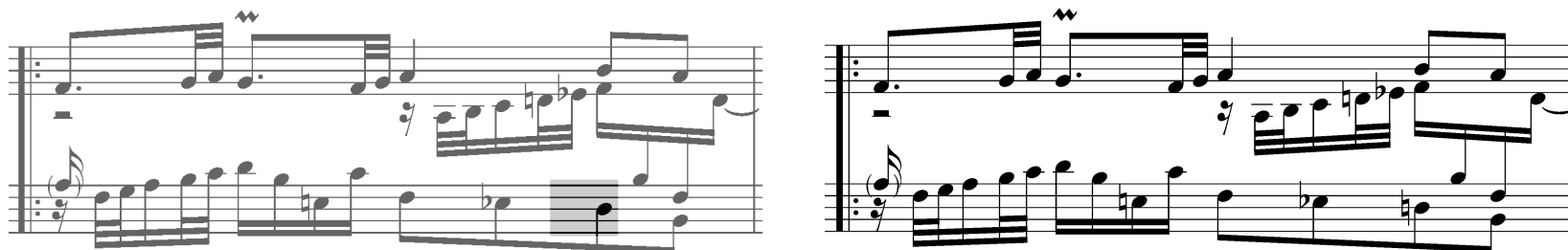


05/11/2018 - BWV 658 - p. 40 m. 1

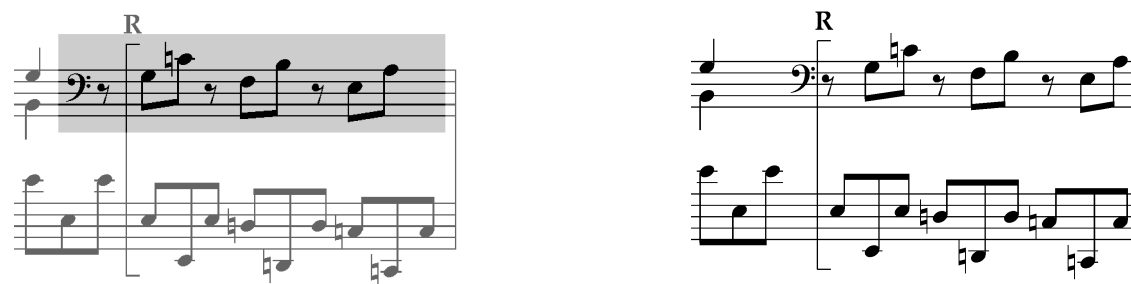
Ténor, 4^{ème} temps *d*-croche, bécarre manquant / Tenor, 4th beat, *d*-eighth, accidental missing.



09/02/2020 - BWV 770 - p. 95 m. 61 – Clé de fa manquante / Bass clef missing.



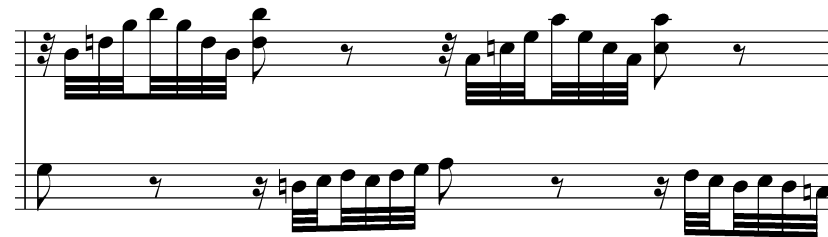
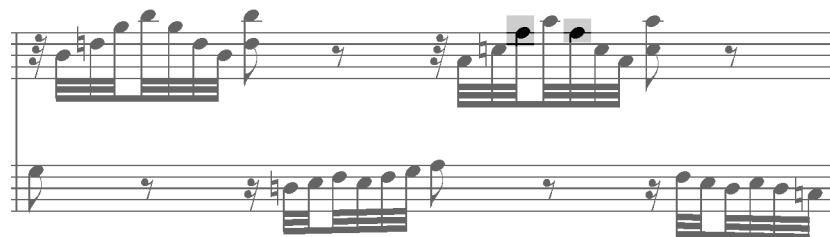
14/02/2020 - BWV 770 - p. 97 m. 54 – Main droite décalée / right hand shifted.



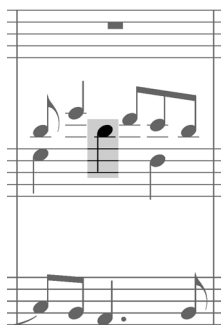
27/02/2020 - BWV 770 - p. 94 Partita VIII, m. 9

Modification de texte. Les f#” sont des conjectures de l'Edition Peters (Vol IX, 1940), mais tous les manuscrits et la BGA indiquent e”.

Text modification. The two f#” are conjectures by the Peters Edition, but all manuscripts and the BGA actually read e”.



20/04/2022 - BWV 652 - p. 25 m. 162 – Ténor, note erronée / Tenor, wrong note pitch.

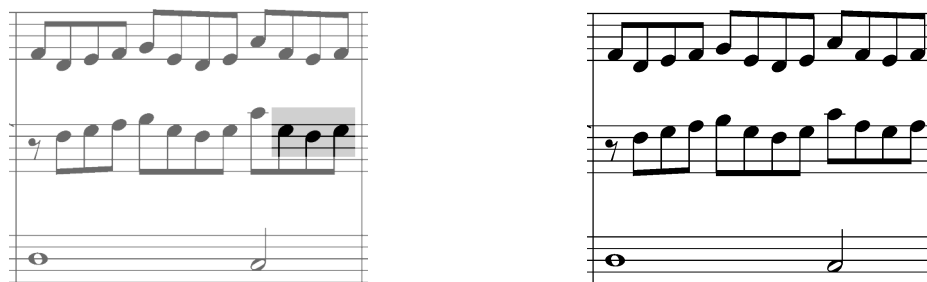


01/05/2022 - BWV 667 - p. 60 m. 5 – Altération pour éviter l'ambiguïté (mesure coupée en deux) / *Added accidental to avoid ambiguity (split bar)*



The image displays two side-by-side musical staves for BWV 667, p. 60 m. 5. Each staff consists of a grand staff (treble and bass clefs) and a separate bass clef staff below. The left version shows a grey highlight on the first measure of the treble staff. The right version shows a sharp sign added to the first note of the treble staff.

30/05/2024 - BWV 663 - p. 50 m. 10 – Erreurs de note / *Wrong note pitches*



The image displays two side-by-side musical staves for BWV 663, p. 50 m. 10. Each staff consists of three staves (treble, middle, and bass clefs). The left version has a grey highlight on the last measure of the middle staff. The right version has a different note pitch in the last measure of the middle staff.